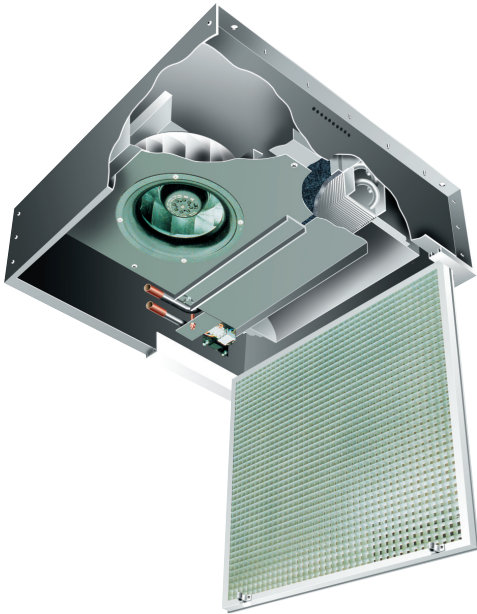




S & P Coil Products Limited

BELGRAVIA TileVector - Technical Data Sheet



Two sizes of Belgravia TileVector are available - SOLO and DUO. Each is available with LPHW or electric heating element options. Dimensions for both styles and technical data for each heating option is given below.

The Belgravia TileVector range is suitable for installation into both T-Bar suspended ceiling grids (600mm x 600mm), plasterboard ceilings, and solid ceilings.

LPHW units are supplied with removable air filter and a low water temperature cutout. Electric heated units have an auto reset over-heat cutout as standard.

DIMENSIONS		
MODEL	SOLO	DUO
Length (mm)	595	1195
Width (mm)	595	
Depth (mm)	210	
Weight (kg)	18	35

TECHNICAL SPECIFICATION								
MODEL	SOLO				DUO			
HEATING OPTION	LPHW			ELECTRIC	LPHW			ELECTRIC
Fan Speed	Boost	Medium	Low	Single Speed	Boost	Medium	Low	Single Speed
Power Supply	1 Phase / 230 V / 50Hz							
Minimum Mounting Height (m)	1.8							
Maximum Mounting Height (m)	3.0							
Air Flowrate (l/s)	95	85	70	121	190	170	140	242
Output 80/70/15°C (kW)	4.0	3.6	3.2	3.0	8.9	8.3	7.3	6.0
Air Exit Temp 80/70/15°C (°C)	50.1	50.3	53.1	35.7	54.0	55.7	58.5	35.7
Pressure Drop 80/70/15°C (kPa)	6.3	5.2	4.2	-	37.6	33.2	26.3	-
Water Flow Rate 80/70/15°C (l/s)	0.095	0.086	0.076	-	0.212	0.198	0.174	-

NOTES:

- Dimensions and weights are given including unit cases and grilles
- Coil supplied with 15mm connections on flow and return
- Motors are high efficiency EC type
- Filters are rated at EU-2 arrestance
- Grilles are hinged, egg-crate style core, all aluminum construction with powder coats or satin-silver finish

BELGRAVIA TILEVECTOR: FAN ASSEMBLY ELECTRICAL DATA

230 V / 50 Hz Supply										
Fan Setting		High			Medium			Low		
Performance		Airflow (l/s)	EC power draw (W)	EC SPF (W/l/s)	Airflow (l/s)	EC power draw (W)	EC SPF (W/l/s)	Airflow (l/s)	EC power draw (W)	EC SPF (W/l/s)
Model	Solo	95	18	0.19	85	14	0.16	70	12	0.17
	Duo	190	36	0.19	170	28	0.16	140	24	0.17