

SPC Suspension Kit

for radiant panels - Gripple-SPC-TB3

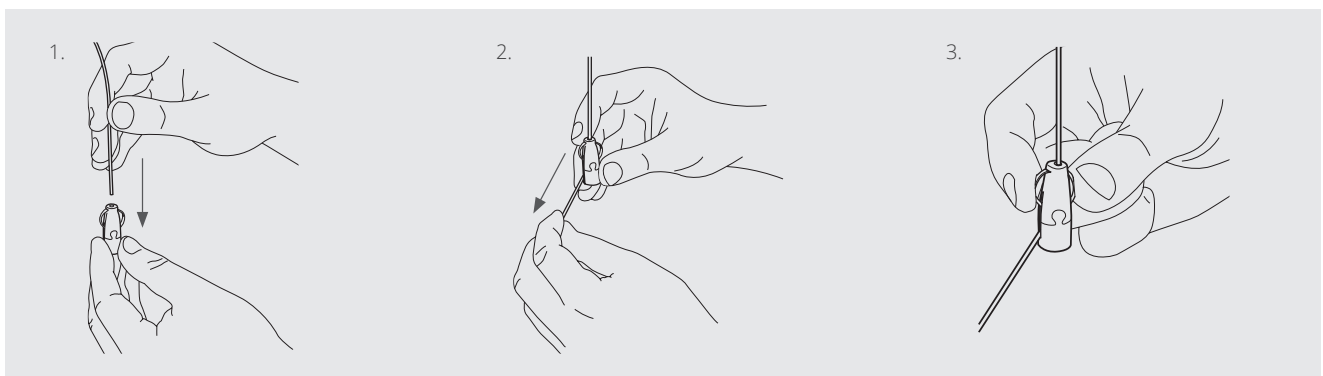
Designed for HVAC applications for quick and easy installations.

Features / benefits

- Simple one handed operation for easy adjustment
- Contemporary design to compliment the overall suspension
- Supplied in convenient, ready-to-use kits in 3m lengths
- Uses 1.5 mm wire rope to make the suspension as discreet as possible
- Reduced installation time



Installation and adjustment

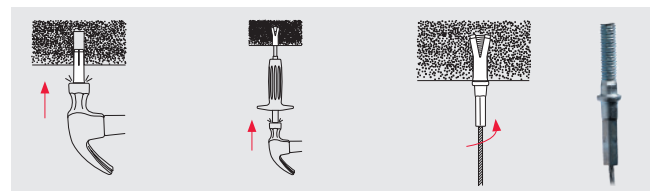
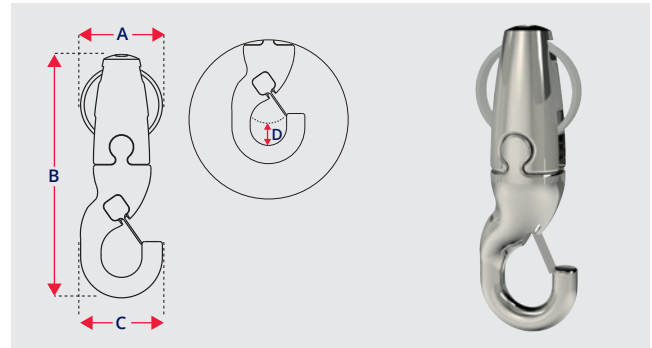


- Safety clasp for security
- Integrated Side Hook with 4.5 mm clearance
- Side wire exit
- Delivered in packs of 2

Dimension	A	B	C	D
Size (mm)	16	47.5	16	4.5

End fixing - Stud

- Ideal for anchoring into concrete ceilings and Channel Nuts
- Supplied with a Drop-in Anchor
- Available up to 225kg SWL, with a 5:1 safety factor
- Available in Stainless Steel



Submittal information

Material:

Housing - Zinc Alloy (EN 12844 ZP2)
Roller - Brass (BSEN 12164)
Spring - Acetal (POM)
Plating - Bright Nickel Plating (BS 4758)

Load Rating:

15 kg @ 5:1 safety factor

Each bracket on the Radiant Panels must have individual fixing points to the soffit / ceiling.



SPC House, Evington Valley Road, Leicester LE5 5LU

T: 0116 249 0044 E: spc@spc-hvac.co.uk

spc-hvac.co.uk

Ref: SPCGripple iss2

