

SPC Zone Control Kit

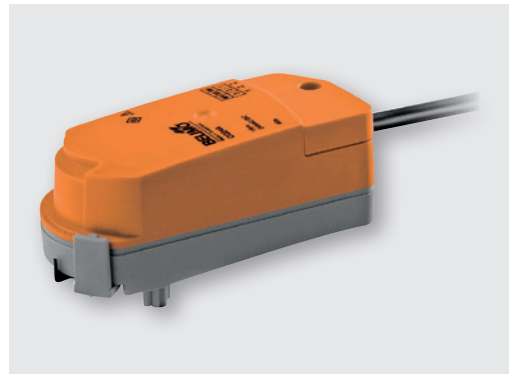
for radiant panels - Order reference 33/920

The SPC control kit allows for accurate control of radiant panels within a specified zone or area.

Each kit comprises 1 off of each of the following items and includes a 5 year warranty as standard.

Belimo Rotary Actuator

- Nominal torque 1 Nm
- Nominal voltage AC 230 V
- Control Open-Close, 3-point
- Variable flow settings
- Maintenance free
- Manual Override
- Position indication
- Factory fitted to Valve (see Below)
- Order code: 33/923



Belimo Zone valve

- For closed cold and warm water systems
- Complete shut off function and modulating control
- ½" nominal bore
- Brass body and stem
- Chrome plated brass ball closing element
- Maintenance free
- Variable KVS setting
- Vertical or horizontal installation (not downward pointing)
- Order code: 33/924



SPC dual sensing digital thermostat

- Power supply AC 230 V
- LCD display mode
- 3 functioning modes
- External pilot wire for night reduction
- Operating temperature range 0°C - 50°C
- Setting temperature range 5°C - 37°C
- °C or °F indication
- Order code: 33/921

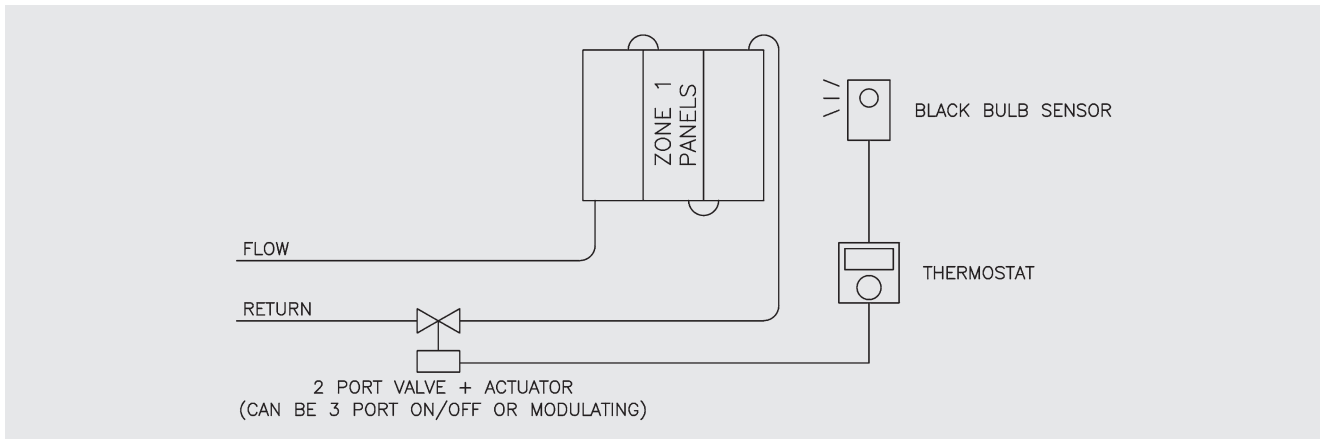


SPC black bulb temperature sensor

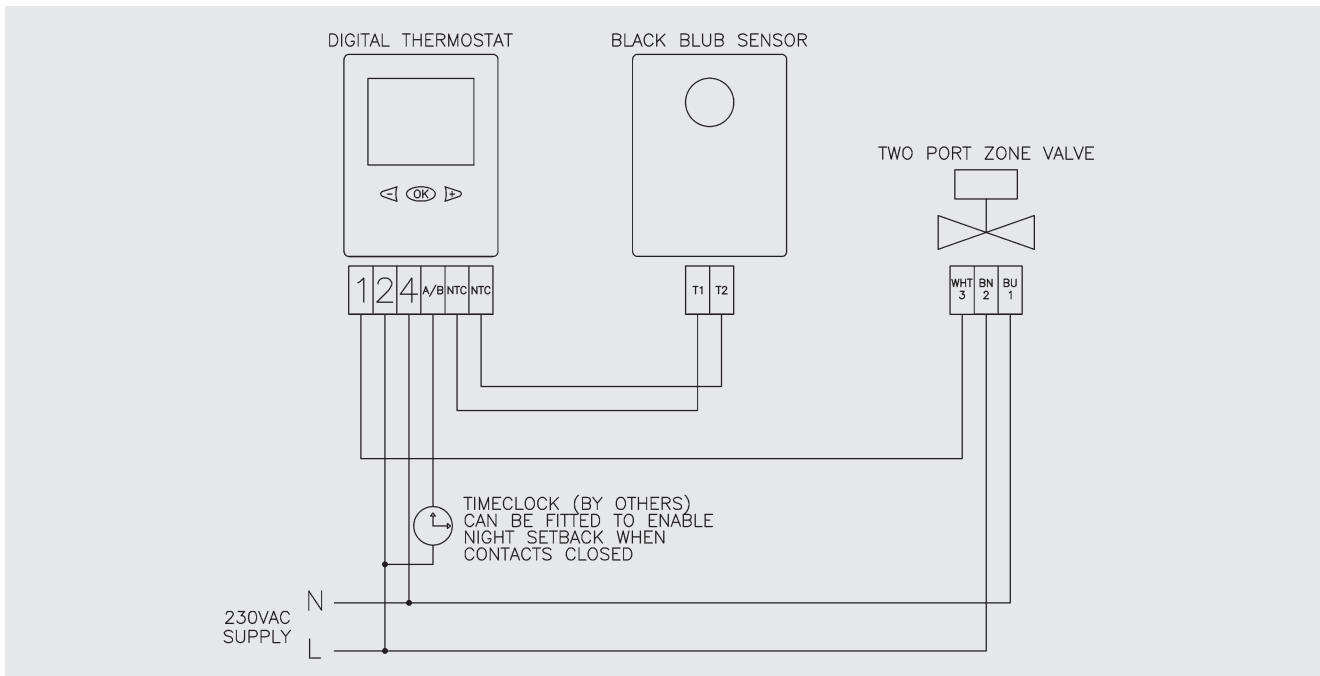
- Measures effective temperature
- Flame retardant ABS housing
- Compact casing
- IP30 Rated
- Ambient range -10°C – 60°C
- Order code: 33/922



Schematic



Wiring Diagram



SPC House, Evington Valley Road, Leicester LE5 5LU
T: 0116 249 0044 **E:** spc@spc-hvac.co.uk
spc-hvac.co.uk

Ref: SPC zone ctrl, issue 1.

