

Reclaim Plus Pump Pack

Unit Summary

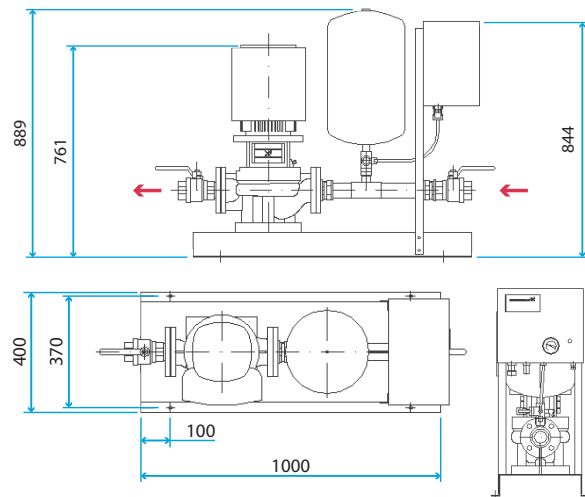
Features & Operational Benefits:

- In-line single stage, centrifugal circulating pump.
- Inverter technology for pump speed control to optimise efficiency.
- Off-line pressurisation set with piston pump, break tank, fill valve, pressure control switch, pressure gauge and overflow connector.
- 24 litre expansion vessel to accommodate system volume change.
- Full bore shut off valves on pump set suction and discharge ports.
- Powder coated steel base.
- Remote control device supplied as standard to access all features of circulating pump.
- Pump set suitable for use with glycol solutions for protection against freezing.



Unit Description

The Reclaim Plus Pump Packs are available in two models, the 2L and 6L. The pump packs have been optimised for use with run-around coupled coil heat recovery systems.



		2L	6L
Circulating pump	Type	TPE2 32-200N	TPE50-290/2
	Power supply (V/Ph/Hz)	230/1/50	400/3/50
	Housing	Cast iron	Cast iron
	Impeller	Stainless steel	Stainless steel
	Seal	Silicon carbide	Silicon carbide
	Motor rating (kW)	0.75	3.0
	FLC (A)	4.2	6.0
	Rotational speed (rpm)	2780	2900
Expansion tank	Type	Diaphragm	Diaphragm
	Preset pressure (bar)	1.5	1.5
	Capacity (litres)	24	24
Pressurisation unit	Power supply (V/Ph/Hz)	230/1/50	230/1/50
	Pump type	Piston type 508LA	Piston type 508LA
	Max. pressure (bar)	2.4	2.4
	Maximum flowrate (litres/hour)	80	80
	Power consumption (W)	25	25
	FLC (A)	0.1	0.1
	Water inlet connection (BSPM)	1/2"	1/2"
	Pressure gauge	50mm, 0 to 6 bar	50mm, 0 to 6 bar
	Overflow connection	3/4"	3/4"
	Make up tank capacity (litres)	4.5	4.5
	Pressure switch range (bar)	0.7 to 6.0	0.7 to 6.0
General	Approximate weight (kg)	90	115
	Connection sizes (BSPF)	1, 1/4	2"
	Fluid	Up to 30% glycol	Up to 30% glycol
	Sound pressure level (dB(A))	<70	59

Circulating Pump Characteristics

